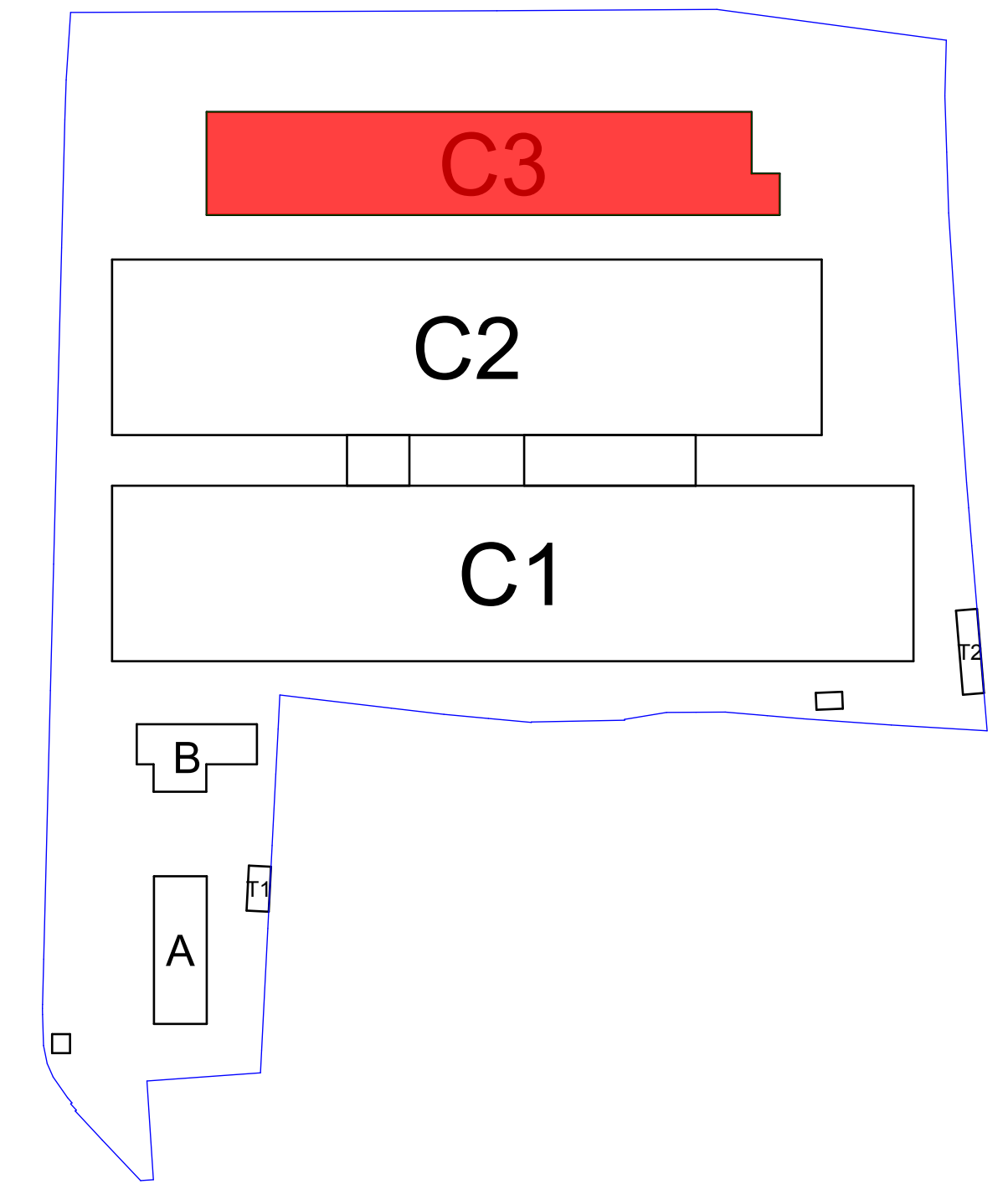
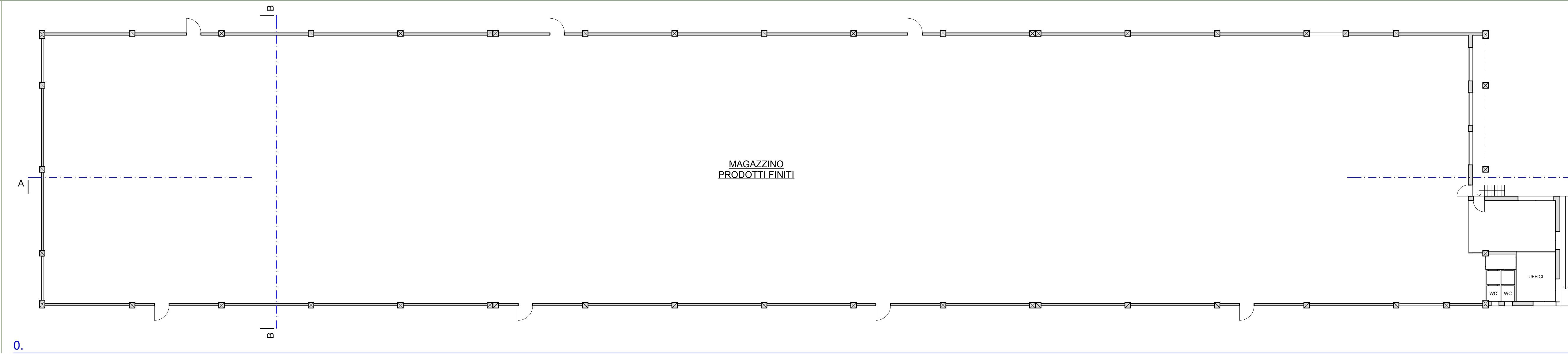
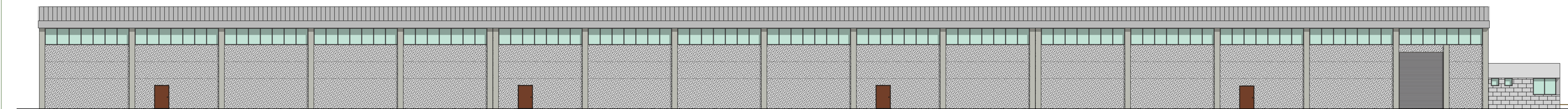


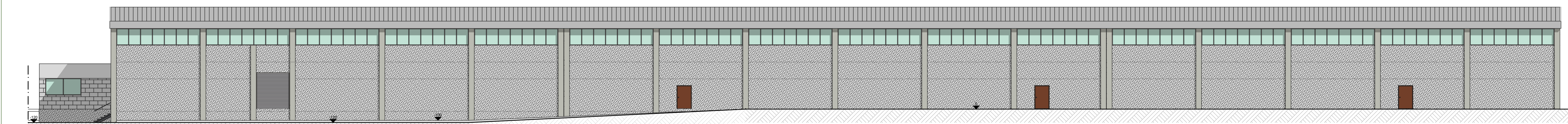
PIANTE



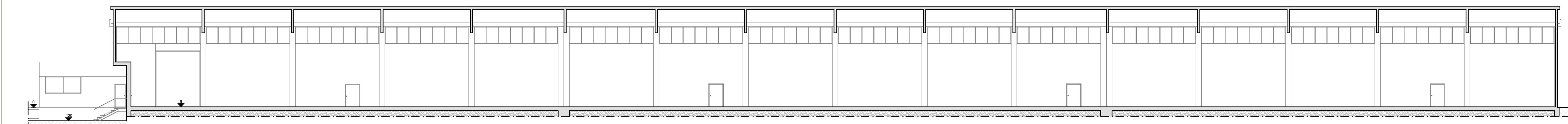
PROSPETTI E SEZIONI



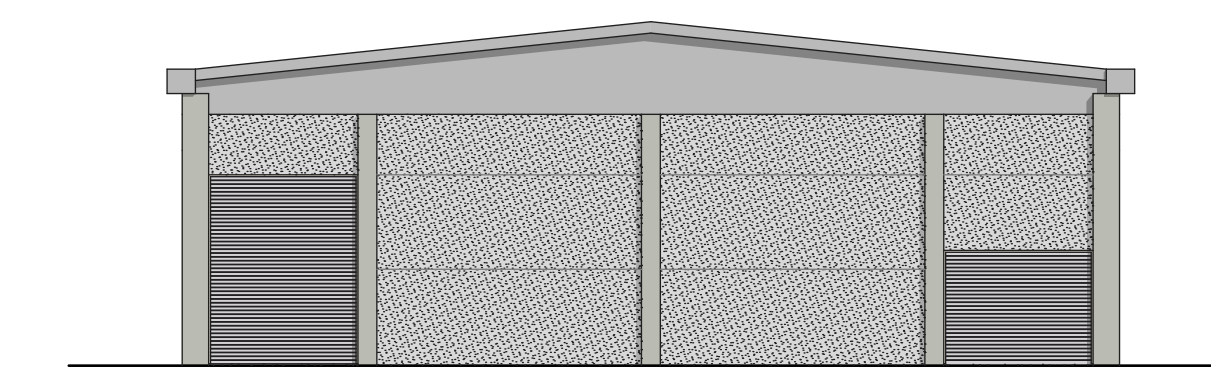
SUD



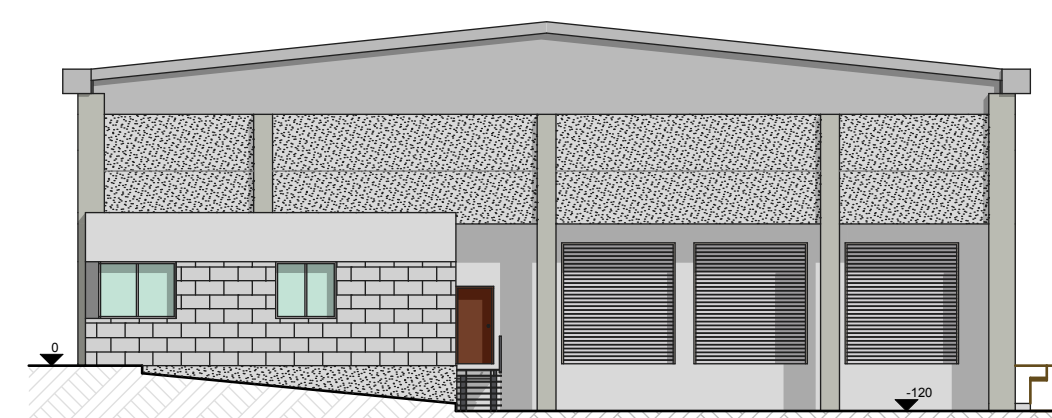
NORD



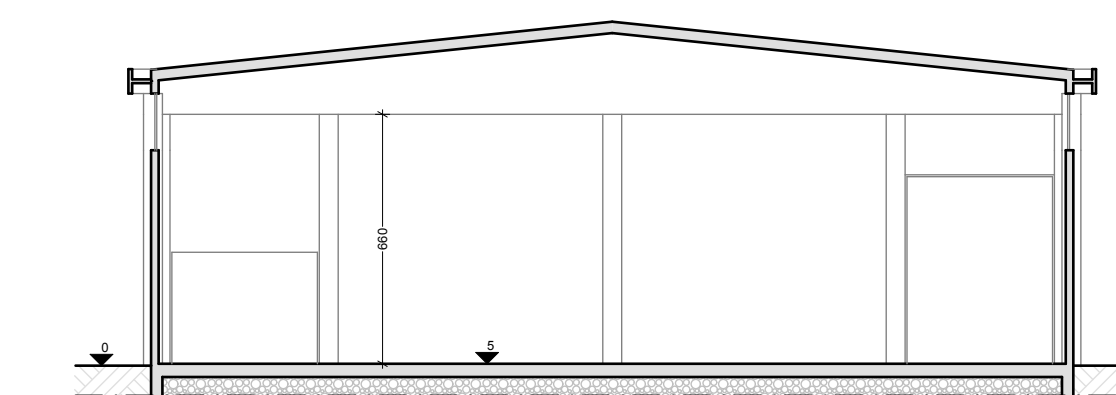
A



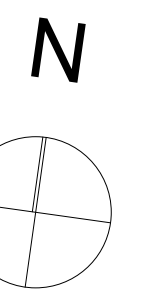
OVEST



EST



B



arch. lucia razzini

via Verdi 38/C Cernusco sul Naviglio (MI)  
tel. 02/9230813 - fax 02/9232171 - e-mail: info@studiorazzini.com



Committente: MONZA INTERNATIONAL S.R.L. - SPRINGSTAR S.R.L.

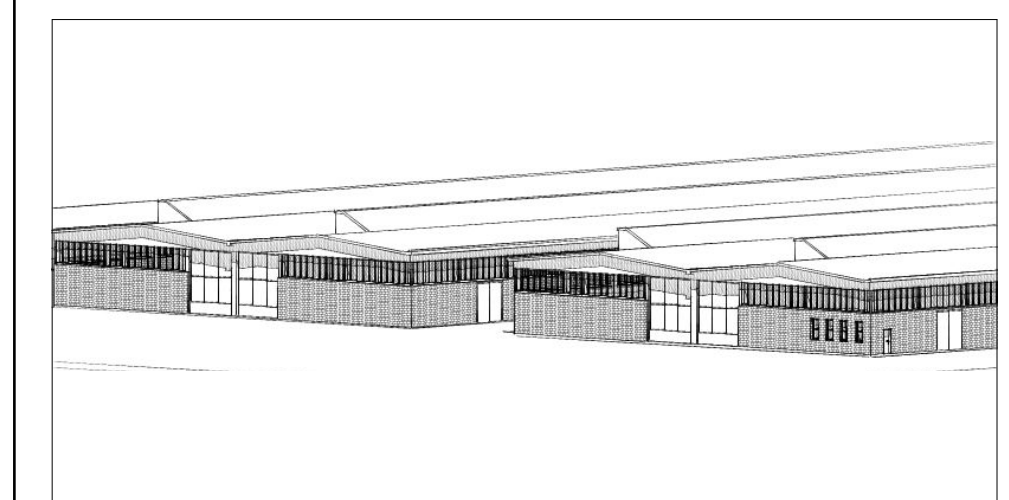
Comune: CERNUSCO SUL NAVIGLIO (MI) - S.S. Padana Superiore, 49

Oggetto:  
PIANO ATTUATIVO - Lotto produttivo a6\_7

Tavola numero

5<sub>Pe</sub>

Titolo:  
PROGETTO EDILIZIO  
SdF - Edificio C3



Il Progettista

Scala:  
1:200

Aggiornamenti:

- 
- 
- 

Data:  
Marzo 2014

Il Committente